

the Wheelagram



Materials Cleaning Systems Division
Wheelabrator-Frye Inc.

VOL. V NO. 3
JANUARY 30, 1981

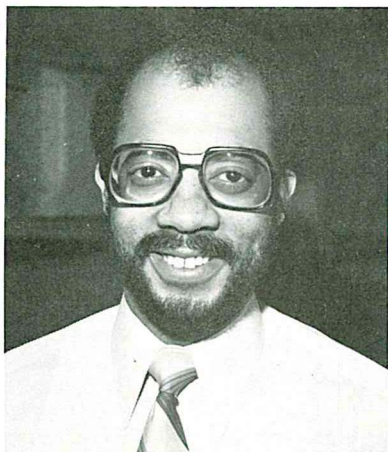
THE SUBJECT WAS SAND — SAND RECLAMATION

. . . Regional Managers and Mishawaka personnel, including representatives from Engineering, International, Product and Process Development, and Marketing and Sales, recently attended a two-day comprehensive seminar covering the foundry industry, sand, and sand reclamation.

Conducting the seminar were WFI experts **Glen Greta**, Sand Reclamation Product Manager, and Technical Manager **Ray Leliaert**. Ray and Glen consider this seminar “the cornerstone for our Sand Reclamation Equipment engineering, manufacturing, and marketing effort for the years ahead.” The seminar is scheduled to be presented to all regional sales and service personnel.



Glen (l) and Ray (r) present a “hands on” demonstration for the seminar participants.



PRODUCTION CONTROL'S Perry Roseman active in the community's Junior Achievement program, was elected Secretary of the JA Advisor Board.

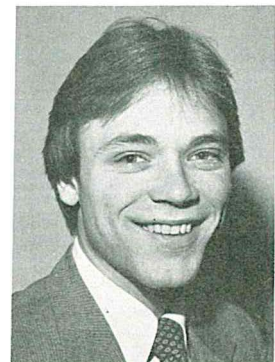
ON THE CALENDAR . . .

- January 31** **Toastmasters Club Installation Dinner.** Beiger Mansion. Social Hour 6:00 p.m., Dinner 7:00 p.m.
- February 2** **Athletic Association's Family Skating Party.** Rainbow Roller Rink. 6:00 til 8:00 p.m.
- February 11** Tickets go on sale for the Athletic Association's **Spring Dinner Dance** March 7, BK Club, \$18 per couple.
- February 13** **Valentine's Day Plant Raffle Drawing.** Cash prizes of \$100, \$50, and \$25. See your area AA rep today for chances — \$1 each or two for \$1.50.
- February 18-22** **Ice Capades — Notre Dame's ACC.** Discount applications for selected performances now available in Personnel.
- February 28** **Credit Union's Annual Dinner Meeting.** 6:00 p.m., BK Club. Call **Walt Wolf** on ext. 329 for tickets — only \$4.50 per person.
- March 1** **Julianna Club Scholarship** applications due today.
Julianna Club's **Chocolate Charlie** being sold at reduced rates. See your area rep today.

NEW FACES . . .



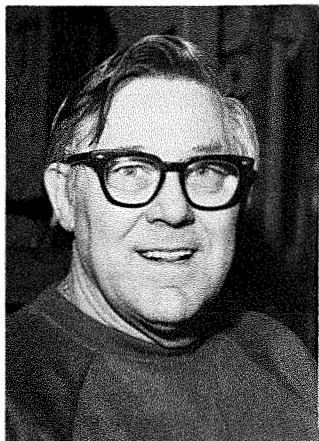
Dave Ketcham
Staff Accountant



Rick Ringlespaugh
Eastern District Manager
Precision Finishing Division

Not on camera, but a “new face” in Blastrac, is Eastern Region Field Technician **Gilbert Vander Bush**.

The gang in Steel Fab bid a fond farewell to **Donald Seltzer** on the occasion of his Wheelabrator retirement. Don — Sheet Metal "A" — retired January 23 with 25 years of company service. Don: Best wishes for a long and happy retirement!



ON THE SPORT SCENE — IN CAPSULE . . .

WFI BOWLING LEAGUE . . . January 20 results: With 51 wins and 25 losses, Stockroom continues to lead the league; High Individual Game (259) **W. Young**; High Individual Three Games (649) **B. Trytko**; chalking up 200 or better scores: **L. Baker** (223), **H. VanWaeyenbergh** (214, 211), **C. Bargo** (212, 209), **C. Wallace** (203), **R. Holbert** (201), **E. Buss** (200).

THANKS . . . JoJo Cukrowicz, an officer of the Mishawaka Bowling Association, extends thanks to our Athletic Association for taking an ad to help with the cost of the 1979-80 Average Yearbook.

WFI TRAP LEAGUE RESULTS (1/18/81): In a first place tie with 20 points each are the "Assembly Smokers" and "Office Shooters." High Gunners: **Chuck Johnson** (45), **Mike Stout** (43), **Chuck Buck** (42), **Tom Kirkpatrick** (42), **Scott King** (41), **Dick Slocum** (40).

SERVICE ANNIVERSARIES . . .

Will Young
 Manager-Production
 Planning and
 Inventory Control
 25 Years (January 3)



Al Stickel
 Shop Scheduler-
 Production Control
 40 Years (January 6)



Bob Reihl
 Foreman-
 Maintenance, Plant 1
 40 Years (January 8)

Not on camera, but marking 25 years of company service January 23, is **Marvin Tucker**, Moline Multiple Drill-Machine Shop.

Chalking up 15 years of service this month are: **Roger Coleman**, Foreman-Maintenance, Plant 1; **Lloyd Burrow**, Plant Superintendent-Bedford; **Gary Weil**, Foundry Industry Manager-Marketing; **Kenneth Grise**, Inspector-Inspection; **Kelly Tucker**, Inspector-Inspection; **Herman Taber**, Arc Welder-Steel Fabrication; **Leo Byrd**, Light Assembler-Balcrank Assembly; **Richard Skiles**, Inspector-Inspection; **Richard Mitchell**, Turret Lathe-Machine Shop; **Hoover Woods**, Yardman-Maintenance, Plant 1; **A. W. "Duke" Mallory**, Manager, Product Planning & Technical Development-Marketing; **Ronald Holbert**, Foreman-Inspection; **Earl Reidenbach**, Semi-Automatic Chucker-Machine Shop; **Eddie Lee**, Inspector-Inspection; **Eugene Kempner**, Turret Lathe A-Machine Shop; **Theodore Gearhart**, Tool & Cutter Grinder-Tool Crib; **Joseph Spite**, General Order Filler & Checker-Stores & Receiving; **Joseph Buczynski**, Precision Grinder-Machine Shop; **Sam Bair**, Material Handler-Machine Shop; **William Klein**, Skill B Layout-Steel Fabrication.



Jim Montgomery
 Lab Technician-
 PFD Demonstration
 25 Years (January 10)



Delores Burtsfield
 Executive Secretary-
 Engineering
 25 Years (January 16)



Hank VanWaeyenbergh
 Foreman-Assembly
 30 Years (January 22)



Emile DeVreese
 Records Specialist-
 Demonstration
 40 Years (January 30)